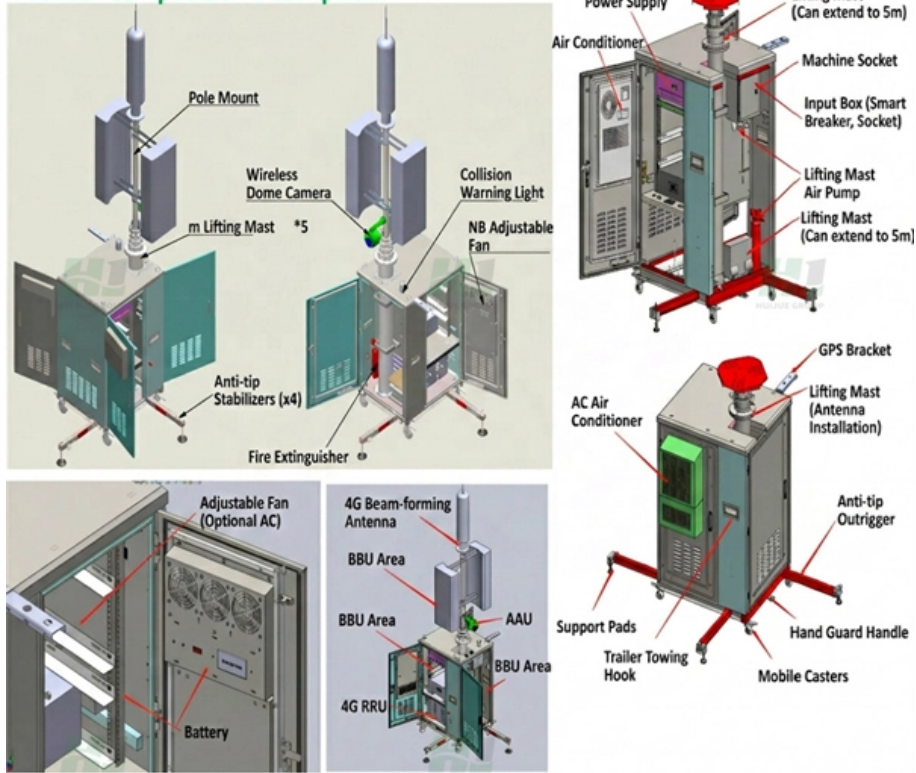


# Roof Stainless Steel Cable Tray Construction

## Product Composition Description





## Roof Stainless Steel Cable Tray Construction

---

# How to Install Cable Tray: A Comprehensive Guide to Different Cable

---

Welcome to our step-by-step guide on installing cable trays! In this video, we'll explore the different types of cable trays available and provide detailed instructions for their installation.

## Design Considerations in Cable-Stayed Roof Structures

---

Prior to the 1950s, steel cables were used primarily for long-span bridge structures, not buildings. In the 1950s appreciable advancements were achieved in the understanding and analysis of cable roof



## **Cable Tray Systems**

---

Durable and reliable cable tray systems providing premium performance in commercial and industrial applications, available in a variety of materials to suit your needs.

## **High Strength Steel Cables in Roof Structures: Applications,**

---

High-strength steel cables have revolutionized the design and construction of space roof structures, offering flexibility, large spans, and aesthetic appeal. However, their use presents

## **Low Price Aluminium Stainless Steel Galvanized Hot DIP Galvanized Cable**

---



We supply a full range of products including trough type, ladder type, tray type, wire mesh cable trays and supporting accessories, available in hot-dip galvanized, fireproof, aluminum alloy, stainless steel

## **Steel Cable Trays in Commercial Buildings: Balancing**

---

In commercial environments, cable trays help streamline infrastructure management, minimize clutter and ensure compliance with safety codes. The

## **Cable trays**

---

Opt for our robust and custom-made stainless steel cable trays, designed to secure and optimize your electrical installations on your construction sites.



## **Cable Tray Technical Guide A practical guide to product selection and**

---

A practical guide to product selection and installation This guide for engineers and installers has been developed by ABB as a practical reference regarding cable tray characteristics, installation, and

## **Best Practice Guide to Cable Ladder and Cable Tray Systems**

---

This guide covers cable ladder systems, cable tray systems, channel support systems and associated supports intended for the support and accommodation of cables and possibly other electrical

## **Fireproof cable tray Cable fireproof tray with complete specifications**

---



Application: Network, Industrial, Construction, Cable Support, Cable Laying Model  
Number: Customized Product Name: Cabletrunking Material: Steel, Aluminum, Stainless  
Steel 201/304/316, FRP, Plastic

## **jingning stainless steel cable tray factory , etrailer**

---

Dive into our vast assortment of jingning stainless steel cable tray factory, where you can fine-tune your search for tailored results.

## **Cable Tray Technical Guide A practical guide to product selection and**

---

In designing supports for a cable tray system, consideration should be given to the loads associated with future cable additions and any additional loading that may be applied to the cable tray system (e.g.,



## **Cable Tray, Metallic Tray System Installation and**

---

This article is about Installation and Commissioning Cable Tray, Metallic Tray System for commercial buildings, plants and refinery projects as per international

## **Outdoor Industrial Waterproof Aluminum Alloy Steel Ventilated Ladder**

---

Outdoor Industrial Waterproof Aluminum Alloy Steel Ventilated Ladder Cable Tray High Quality for Power Station Construction High No reviews yet 100 sold Complies with EU standards Guangdong

## **Cable Trays Manufacturer & Supplier in India**

---

Ajay Industrial - global cable tray manufacturer & supplier in India. Heavy-duty, stainless



& mild steel cable trays. Multiple sizes & materials. Enquire now!

## Essential Steps for Cable Tray Installation on Roof

---

Learn essential steps for cable tray installation on roof, including support systems, material selection, and environmental considerations for optimal

## Design Considerations in Cable-Stayed Roof Structures

---

This innovative structure utilizes 10-story tall composite masts and a series of splayed cables that support shallow curved steel roof members. The thin roof framing is cold-bent to shape, and



# Technical Guidelines for Cable Tray Installation and

---

Cable tray installation must comply with specific technical standards to ensure electrical safety, system reliability, and long-term maintainability. This document

## Stainless steel equipment for construction

---

The company manufactures hundreds of kilometers of stainless steel cable trays each year and offers a wide range of accessories, welded mesh, and stainless

## 100+ Essential Questions Answered About Cable Trays:

---

Discover over 100 expert answers about cable trays, covering key topics like material selection, load capacity, installation methods, and maintenance.



## **CABLE TRAYS GENERAL INFORMATION AND**

---

Cable tray systems are to be installed so they are accessible. If possible 300mm minimum should be left above or between installed systems to allow for cable

### **Cable Trays and Accesories**

---

SFSP cable trays and accessories from SFSP are manufactured from steel sheets in accordance with BS EN 10130/BS EN 10131/ BS EN 10051, complying with BS

### **Cable Trays and Accesories**

---

SFSP manufactures a wide range of products capable of providing the characteristics which respond to the proposed application, along with quality of assembly, speed



## **gabon stainless steel pallet cable tray , etrailer**

---

Find exactly what you're looking for in our diverse selection of gabon stainless steel pallet cable tray to make sure you have the perfect solution for your needs.

## **Metal Cable Tray Installation Guidelines , Cable Tray Institute**

---

The Cable Tray Institute is making available the current edition of this practical guide for the proper installation of aluminum or steel cable tray systems. These guidelines will be useful to engineers,

## **Eurostrut Cable Trays , cable tray, cable route and**

---



Strong and durable - Made of hot-dip galvanized steel or stainless steel, suitable for indoor and outdoor applications. Fast installation - Reduce installation costs with

## Contact Us

---

For datasheets, pricing, or custom optical networking solutions, please visit:  
<https://www.entrenamientointeligente.es>