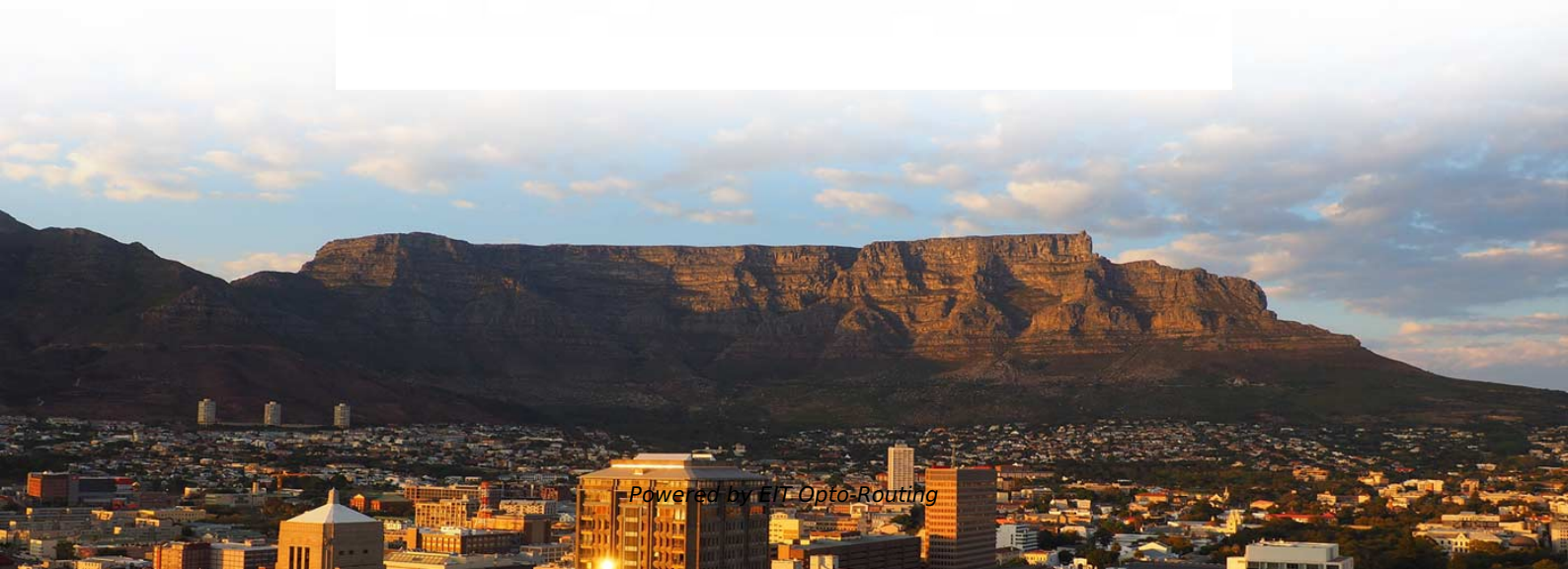
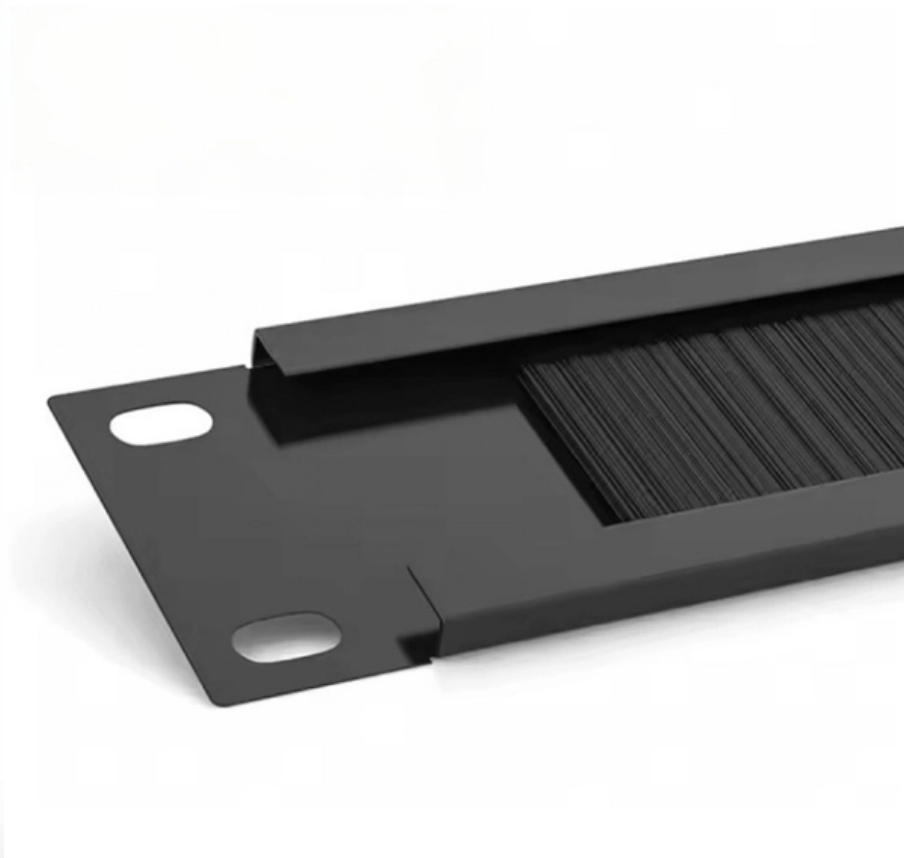


# **Single-mode optical module paired with multi-mode optical module**





## Single-mode optical module paired with multi-mode optical module

---

## Introduction of 10G SFP+ Optical Modules

---

Fiber SFP+ uses LC connectors for longer distances, depending on the specific module and fiber type (typically up to 300 meters or more). Within

## sfp singlemode vs multimode optical modules

---

For data accuracy, short-wavelength LC SFP modules are typically pair with multimode fiber (orange fiber patch cords), while long-wavelength LC

## Optical Module Working Principle , SFP Transceiver



## Technical Guide

---

Understanding the working principle of optical modules--especially SFP transceivers--is critical for network engineers, data center operators, and telecom professionals tasked with building and

## What Is an SFP Module? -- Complete Guide to SFP, SFP+ & SFP28

---

Core Functions of an SFP Module SFP modules perform three primary functions in a network: Electrical-to-optical or optical-to-electrical conversion For optical modules, the SFP contains a TOSA (Transmit

## How to Check If My SFP Is Single Mode or Multimode

---

Using test tools Devices such as optical power meters and OTDRs are often used during troubleshooting. They will not label a module as single mode or multimode for you, but by looking at



## Single-mode vs Multimode SFP: What's the Difference?

---

Discover the differences between single-mode and multimode SFP transceivers. Learn which one suits your network needs for optimal performance

## Connection Schemes for Optical Module and Fiber Patch Cord

---

Here's an example: 100G QSFP28 LR4 optical module operates at wavelengths from 1295.56nm to 1309.14nm, using CWDM transmission technology and LC duplex interfaces. It pairs with single



## The Difference Between Single/Dual Fiber and

---

Understanding the distinction between single vs. dual fiber and single-mode vs. multi-mode is essential when deploying optical modules in any fiber

## Single-Mode Vs Multimode Optical Modules: Detailed

---

Is your data center or campus network best served by Single Mode or Multimode Optical Modules? Choosing between Single Mode and Multimode Optical

## Optical Transceiver Market Insights and Growth Report

---

A single-mode fiber transceiver is a self-contained optical transceiver module that can receive and send data over single-mode optical fiber cables that enable



## What Are the Key Parameters of Optical Modules

---

Understand the key parameters of optical modules, including transmission rate, distance, wavelength, and fiber compatibility, for better network

## Single Mode vs Multimode SFP Modules: Which One to

---

Short answer: No. Single mode and multimode optic fibers, or SFP modules, are developed with incompatible structure and light transmission

## The difference between single-mode and multi-mode in

---



The light source of a multi-mode optical module is a light-emitting diode or a laser, while the light source of a single-mode optical module is an LD

## Single Mode vs Multimode Fiber: Choosing the Right

---

Single mode vs multimode fiber: Learn the core differences in distance, speed, and cost. Our guide helps you choose the right fiber for your

## Single Mode Optical Modules Market 2026

---

Single Mode Optical Modules Market size was valued at USD 5.8 billion in 2025. The market is projected to grow from USD 6.3 billion in 2026 to USD 10.2 billion by 2034, exhibiting a CAGR of 6.1% during



## **Learn how to choose the right SFP module for your network. Avoid**

---

Learn how to choose the right SFP module for your network and avoid common compatibility mistakes. This practical guide explains SR vs LR, singlemode vs multimode,

## **Single Mode SFP vs Multimode SFP: What the**

---

A single-mode SFP is specially used with the 9/125 $\mu$ m single-mode fiber (SMF) but can not be used with multimode fiber cable. It utilizes ultra-low

## **The Key Differences Between 1-core, 2-core, Single**

---



Single Mode fibers have a smaller core, allowing light to travel in a single, straight path, ideal for long distances with less signal loss. Multi-mode

## Understanding Single-mode and Multi-mode Optical

---

· Paired with Multi-mode Fiber: While single-mode optical modules can technically work with multi-mode fiber over short distances, the effectiveness cannot be

## Can I use single mode equipment over multimode cable and vice

---

So what's the cause of mix-using multimode and single-mode fiber? As we see, the optics applied in point-to-point interconnection are symmetrical. For instance, end A with a 10G SFP+ port



## Deep Dive: Optical Module Market

---

Optical modules can also be categorized into single-mode versus multimode modules. Single-mode modules often use EML (Electro-absorption Modulated Lasers) as the lasers, which are

## Single Mode vs Multimode Fiber, What is The

---

Learn the key differences between single mode vs multimode fiber cables and choose the right one for your fiber optic system.

## SFP28 o QFSP28 Optical Modules for Sale , Cables on Demand

---

SFP28 o QFSP28 Optical Modules Amphenol 25G SFP28 Optical Transceiver Modules and 100G QSFP28 Optical Transceiver Modules Available Now in SR (Short-Range) Multimode



## How to tell the difference between single mode and multimode fiber

---

It works with copper Ethernet cables or fiber optical cables. On the fiber optics side, there are single mode SFP module and multimode SFP module, which allows users to select the

## Single-Mode Fiber and Multiple-Mode Fiber

---

Mode indicates the transmission path of optical signals that enter a fiber at a certain angular velocity. A fiber supports as many transmission modes as its diameter allows. Fibers are classified into single



## How to Differentiate Between Single-Mode and Multi

---

Choosing between single-mode and multi-mode optical modules depends on the specific requirements of your network application, including

## The Ultimate Guide to SFP Modules (2026): Types,

---

Confused by SFP vs SFP+? Read the definitive 2026 guide on SFP modules. We explain Single Mode vs Multimode, DDM diagnostics, and how to choose the right

## 1.6T OSFP 2xDR4/DR8, 1310nm, 500m, DDM, CDR,

---

The MJ-OSFP1.6TB-DR8 is a cost-effective, high-performance OSFP module tailored for AI datacenter applications, delivering an aggregate throughput of 1.6



## Contact Us

---

For datasheets, pricing, or custom optical networking solutions, please visit:  
<https://www.entrenamientointeligente.es>