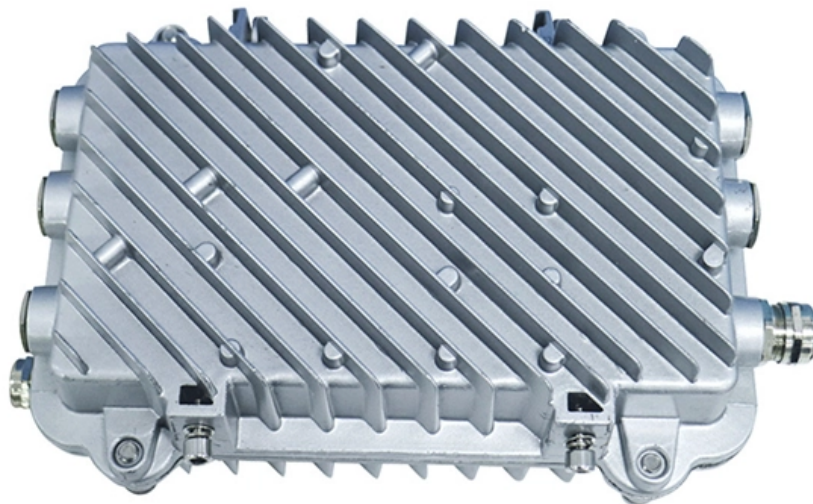


# **Small bolts in the distribution box**





## Small bolts in the distribution box

---

# How to Install a Distribution Box--A Comprehensive

---

Distribution Box Installation: Put the distribution box on the installation surface, and align the position of the expansion bolts and tighten the screws. This

## What Is a Distribution Box?

---

What to Look for When Choosing a Distribution Box If you're going to buy a distribution box, there are several things you should look for. You should

## What hand and power tools are used to install a

---



Install distribution box systems with essential hand tools like screwdrivers and pliers, plus power tools such as drills and impact drivers for efficient setup.

## Small distribution box installation steps

---

The small distribution box needs to be installed on the base, so the base of the distribution box needs to be installed at the selected location. The

## An article lets you instantly understand the internal structure of the

---

The distribution box also includes current transformers and voltage transformers, which are used to monitor current and voltage values and provide data support. In terms of internal layout, the



## How To Distribute The Distribution Box Reasonably?

---

How to distribute the distribution box reasonably? 1. When the distribution box is installed on the wall, it should be fixed with split bolt (expansion

## Requirements And Specifications For Installation Of

---

The fixing method should be firm and reliable to avoid movement or tilting of the box due to vibration or collision. It is recommended to use a suitable

## The Complete Guide to Distribution Box: Installation, Types & More

---

Busbars are metal strips or bars that distribute electrical power throughout the



distribution box. They carry current from the main switch to individual circuit breakers, providing a reliable

## Distribution Box Guide

---

Distribution Box Size Introduction to Standard Sizes Distribution boxes come in various sizes depending on their intended use: For residential applications, smaller boxes are typically

## The installation requirements for the distribution box

---

Introduction Understanding The Components of A Distribution Box Selecting The Right Distribution Box Site Preparation and Location Requirements Electrical Connections and Wiring Compliance with Standards and Regulations Conclusion What Is a Distribution Box? A distribution box, also known as a power distribution unit, is a critical component in any electrical system. It is the control center for electricity in your home or business. It takes the electrical power coming into the building and distributes it to different circuits. Each circuit then powers various device Why Proper Installation Matters Installing a distribution box correctly is about more than just making sure the lights turn on. It's



about safety, efficiency, and reliability. A poorly installed distribution box can lead to a host of problems. These include electrical fires, short circuits, and even complete power failures. Proper installation ensures that See more on eabel Published: Feb 7, 2025juxinfasteners

## High Quality self locking nut - juxinfasteners

M6 screws: M6 screws have a diameter of 6mm and are suitable for use in large distribution boxes with high load-bearing capacity. In the installation of large parts

## High Quality self locking nut

---

Distribution box screw specifications are generally M3, M4, M5, M6, M8, etc. Different specifications of screws are suitable for various occasions and needs.

## The Complete Guide to Distribution Box: Installation, Types & More

---

What's the difference between a distribution box and a sub-panel? A distribution box



typically refers to the main electrical panel that receives power from the utility service. A sub-panel is

## **What Is an Electrical Distribution Box? A Complete Guide**

---

What Is an Electrical Distribution Box? An electrical distribution box serves as a centralized unit for distributing electrical power within various structures,

### **Size determination, installation method and wiring mode**

---

The distribution box is the central hub of the home circuit and the general control of our daily power consumption. It is an indispensable electrical equipment. If there



## Distribution Box Guide: Types, Components & Solutions

---

Understand distribution boxes (DB boxes) in 5 minutes. Learn about types, components, functions, and uses. Find the perfect DB box for your needs.

### Distribution Box Wiring Steps

---

Preparation phase: Box installation: Make sure that Distribution box has been correctly installed and fixed. Material preparation: Prepare the required cir

## Distribution Boxes Explained: Types, Functions, and

---

Learn about distribution boxes, their types, functions, and safety features to ensure efficient and secure electrical power distribution in any building.



## What hand and power tools are used to install a

---

When you install distribution box assemblies, you'll also need banding tools for mounting. These include stainless steel banding and buckles, as well as a

## Understanding Distribution Boxes:A Comprehensive Guide

---

A distribution boxes is an essential device that manages the safe and efficient flow of electrical power throughout different areas of a building or facility.

## Electrical wiring and busbar arrangement of



## distribution box

---

The distribution box is composed of independent single box connected by bolts, and the bottom of the box is composed of 3mm aluminum zinc coated steel sheet solid welding plate at the front and back.

## How To Connect A Distribution Box

---

Learn how to connect a distribution box with this easy-to-follow, step-by-step guide. From tools and materials needed to common installation mistakes and solutions, this comprehensive article will

## Distribution Box Installation: A Complete Guide to Safe

---

Mount the distribution box in a convenient, accessible location that complies with local electrical codes. Typically, this is in a basement, utility room, or garage.



## **How To Distribute The Distribution Box Reasonably?**

---

When the distribution box is installed on the wall, it should be fixed with split bolt (expansion bolt). The bolt length is generally the sum of the embedded

## **What is the Function of a Distribution Box in Electrical Systems**

---

Understand the function of the distribution box in electrical systems and how it ensures safe and efficient power distribution.

## **A Definitive Guide To Distribution Boxes**

---



The distribution box acts as the center of power distribution, distributing electricity to all connected devices. A distribution box, also known as a distribution board, panel board, breaker

## Power Distribution Boxes Explained Simply

---

Learn what a power distribution box is, how it works, key components, types, and why it's vital for safe and efficient electrical systems.

### Contact Us

---

For datasheets, pricing, or custom optical networking solutions, please visit:  
<https://www.entrenamientointeligente.es>