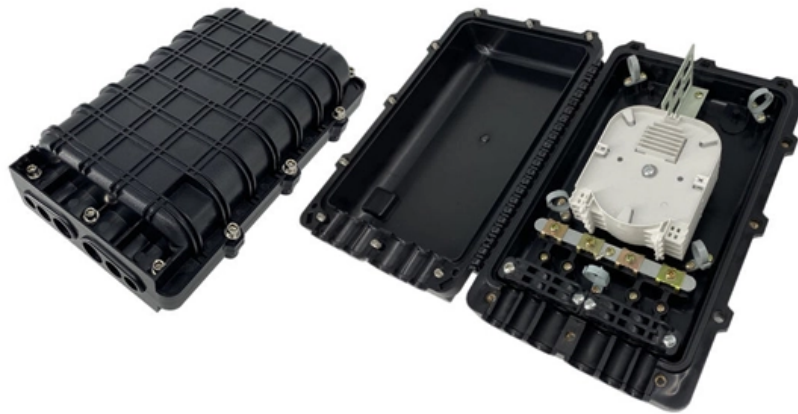


Stainless Steel Cable Tray Acceptance Standards





Overview

The International Electrotechnical Commission (IEC) provides detailed guidelines for cable tray systems under IEC 61537. This standard outlines the construction requirements, testing methods, and performance parameters for cable trays and related support systems. Cable trays play a vital role in supporting electrical cables and wires in commercial, industrial, and utility installations. For proper installation, design, and maintenance, adherence to international standards is essential. The Cable Tray ng standards, performance standards, test standards and application in this document have been tested extens ompetent professional en completely installed, without damage either to conductors or. Transverse members (rungs) or corrugated bottoms shall be welded to the side rails with Type 316.



Stainless Steel Cable Tray Acceptance Standards

Analysis of acceptance Standard of stainless Steel Cable tray

In our life, the acceptance of stainless steel bridge is very important. If unreasonable design is found in the process of acceptance, it can be corrected in time to avoid future errors caused

Understanding IEC 61537: A Comprehensive Guide to

Focusing on the technical aspects of cable tray systems, IEC 61537 outlines strict requirements and regulatory guidelines for various technical indicators.



12-SDMS-06

4.1.2 The Metallic cable trays shall be manufactured in accordance with NEMA VE-1 standard and/or equivalent IEC standard. 4.1.3 Metallic cable trays shall be designed as a mechanical support for

Analysis of acceptance Standard of stainless Steel Cable tray

At this point, please use the fireproof alloy cable tray. In our life, the acceptance of stainless steel bridge is very important. If unreasonable design is found in the process of acceptance,

STAINLESS STEEL CABLE TRAYS, 304 316 STAINLESS STEEL



Stainless steel cable tray is available in ten standard widths - 50mm, 75mm, 100mm, 150mm, 225mm, 300mm, 450mm, 600mm, 750mm and 900mm. A full range of couplers, bends, tees and risers are

Full cable tray systems specification document

B. Cable tray systems are defined to include, but are not limited to straight sections of [ladder type] [trough type] [solid bottom type] [channel type] cable trays, bends, tees, elbows, drop-outs, supports

Factory Direct Sales Stainless Steel 304/316 Perforated Cable Trays

Factory Direct Sales Stainless Steel 304/316 Perforated Cable Trays Manufacturer with Customizable Options for Construction No reviews yet Certificates:LVD,



Cable Tray SPCT 100/100SS304 , Ramdev Steel Industries

Perforated Cable Tray System expertly constructed from high-grade stainless steel, offering exceptional durability and resistance to corrosion. With side height

26 05 36 Cable Trays for Electrical Systems

Eaton B-Line series Engineer-approved equal METAL CABLE TRAYS Description: This product category covers metal cable trays and metal cable tray systems intended for field assembly and for

Series 3 & 4 Stainless Steel Specification Document

2.08 General: Except as otherwise indicated, provide metal cable trays, of types, classes



and sizes indicated; with splice plates, bolts, nuts and washers for connecting units.
Construct units with

CABLE TRAYS GENERAL INFORMATION AND

Cable tray systems are to be installed so they are accessible. If possible 300mm minimum should be left above or between installed systems to allow for cable

Cable Tray Technical Guide A practical guide to product selection and

This guide for engineers and installers has been developed by ABB as a practical reference regarding cable tray characteristics, installation, and requirements.



cable tray technical specifications

stainless steel 304 & 316 tray Stainless steel manufactured to ASTM 9108-94 (2015) or BS EN 10088-1: 2014 without a post treatment. The European standard that lists the chemical composition of

What is the acceptance standard of stainless steel cable tray

At this point, use fireproof bridges. In our life, the acceptance of stainless steel cable tray vendors is very important. If unreasonable design is found in the process of acceptance, it can be

100+ Essential Questions Answered About Cable Trays:

The primary standards include, but are not limited to, Technical Specifications for Cable



Tray Installation Projects (CECS31:2006), Steel Structure

cable tray technical specifications

The European standard that lists the chemical composition of stainless steels which are subdivided in accordance with their main properties into corrosion resisting steels, heat resisting steels and creep

INFORMATION ON STANDARDS FOR CABLE TRAYS - Kıraç Metal

NEMAVE1: Specifies requirements for metal cable trays and associated fittings designed for use in accordance with the rules of Canadian Electrical Code and the National Electrical Code.



Cable Tray Technical Guide A practical guide to product selection and

Cable Tray Technical Guide A practical guide to product selection and installation This guide for engineers and installers has been developed by ABB as a practical reference regarding cable tray

Understanding IEC 61537: A Comprehensive Guide to

IEC 61537 is a crucial international standard established by the International Electrotechnical Commission (IEC). The Chinese national standard GB/T 21762

GUIDE CABLE TRAYS TECHNICAL

Specifies requirements for metal cable trays and associated fittings designed for use in



accordance with the rules of Canadian Electrical Code, Part I and the National Electrical Code®

GUIDE CABLE TRAYS TECHNICAL

In accordance with its continuous improvement policy, Legrand reserves the right to change the specifications and illustrations without notice. All illustrations, descriptions and technical information

Series 3 & 4 Stainless Steel Specification Document

Construct units with rounded edges and smooth surfaces; in compliance with applicable standards; and with the following additional construction features. Cable tray shall be installed according to the latest



STANDARD PERFORATED CABLE TRAY

STANDARD PERFORATED CABLE TRAY Suitable for power and data cable routing in industrial, commercial, and infrastructure projects. Manufactured from high-quality GI, Hot Dip Galvanized,

IEC Standard for Cable Tray: Complete Technical Guide

IEC 61537 is the internationally recognized benchmark for metal cable tray systems. It applies to cable trays made of steel, stainless steel, aluminum, or

Codes and Standards , Cable Tray Institute

The Cable Tray Institute is making available the current edition of this practical guide for the proper installation of aluminum or steel cable tray systems. These guidelines will be



useful to engineers,

Cable Tray Specifications and Compliance , PDF

The document is a compliance statement for cable trays being used on a construction project. It lists the project details and 14 specification requirements

Codes and Standards , Cable Tray Institute

Provides technical requirements concerning the construction, testing, and performance of metal cable tray systems. It is the first joint effort of NEMA and CSA International to put in one place standards



Cable Tray Standards , Cable Management , Metsec

6.5.2 Metsec cable tray systems are made of steel with metallic finishes or stainless steel (Resistance to corrosion is classified according to Table 1 and follow the

Contact Us

For datasheets, pricing, or custom optical networking solutions, please visit:
<https://www.entrenamientointeligente.es>