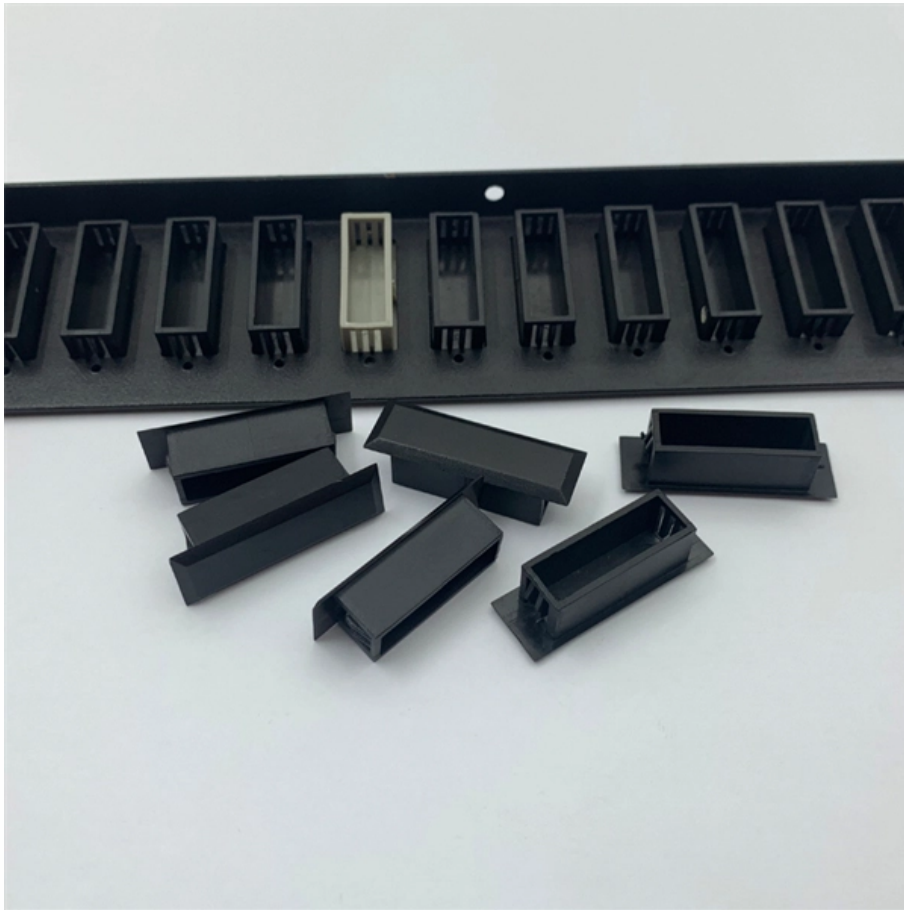


# The OLT port is occupied by other optical splitters





## Overview

---

**OLT Model & Split Ratio:** The OLT connects to ONTs via optical splitters, which distribute the signal. A common split ratio is 1:32 (one OLT port serving 32 ONTs), but ratios like 1:64 or 1:128 are also used in large-scale deployments. The OLT communicates with the optical network unit (ONU) or optical network terminal (ONT) at the user end, coordinating the distribution of data and ensuring that each connected user receives the appropriate information. The communication process includes:

**Downstream Data Transmission:** The OLT sends data packets (e. An optical line termination (OLT), also called an optical line terminal, is a device which serves as the service provider endpoint of a passive optical network. PON networks rely on passive components (no power required) to transmit data between a central OLT (located in a telecom central office or data center) and end-user ONTs.



## The OLT port is occupied by other optical splitters

---

# Understanding OLT, ONU, ONT, and ODN in PON

---

Furthermore, an Optical Distribution Network (ODN) is used in the transmission process between the OLT and ONU/ONT. Optical Line Terminal

## Troubleshooting Optical Splitters , ICT Solutions & Education

---

Optical splitters in the outside plant (OSP) are used mostly in passive optical networks (PONs) for fiber-to-the-user (FTTx) networks, and are often overlooked as failure points. In this article I focus on a



## What are OLT, ONU, ONT and ODN in PON?

---

A GEAPON system usually consists of an OLT (Optical Line Terminal) at the service provider's central office and multiple ONU (Optical Network Units) or ONT (Optical Network

## Fiber Optic Splitters for PON Networks: 2025 Guide

---

What Are Fiber Optic Splitters in PON? Fiber splitters are passive devices that divide one optical input signal into multiple outputs. In PON: - One

## Decoding OLT, ONU, ONT, and ODN in PON Network

---

In the PON network, there is an OLT at the service provider's central office and a number of ONU devices or optical ONT devices near end users, as



## Exploring the Functions of GPON OLT and ONT in

---

The main components of a GPON system include the Optical Line Termination (OLT), Optical Network Unit (ONU), and Passive Optical Splitter. The

### Optical splitter

---

Optical splitter is a component of PON network. It is a passive device connecting OLT and ONU. Its function is to distribute downstream data and concentrate upstream data. The optical

## Optical Line Terminal (OLT) The Ultimate Guide

---

It aggregates multiple ONUs/ONTs through optical splitters and handles data distribution,



management, and synchronization. In simple terms, the OLT is the

## Split Ratios and Splitting Level of Optical Splitters

---

The optical splitters have no active electronics and don't require any power to operate. They are typically installed in each optical network between the

## PON Network Components Overview: OLT, ONU, ONT,

---

ODN is also an indispensable part of the PON system, which serves as the physical transmission medium between the ONU and the OLT and the



## **Guide to Optical Line Terminal (OLT) Classifications:**

---

As network demands become more complex, a variety of OLT types have emerged in the market to meet different application needs. This article will

## **Splitter vs Coupler: What Are the Differences?**

---

Fiber splitter typically have at least 2 ports and can have up to 128 ports. The two most commonly used fiber optic splitters are the traditional fused

## **What Is an OLT? , Definition, Function & Role in GPON**

---

In short: The OLT (Optical Line Terminal) is the central control unit of a Passive Optical Network (PON). It converts data signals, manages bandwidth,



## **FBT vs PLC Splitters - Key Differences in Fiber**

---

Discover FBT vs PLC splitters in fiber optic networks. Learn key differences, pros & cons, and best use cases for FTTH, telecom, and data center

## **Defining OLT: Optical Line Terminal**

---

**Downstream Data Transmission:** The optical signals, carrying aggregated downstream data, are transmitted from the OLT to the Optical Network Units (ONUs) or Optical Network Terminals (ONTs)

## **Full Guide of PON: OLT, ONT, ONU, ODN and other**

---

The ODN provides the physical connection between the ONU and OLT over a distance of



20 km or more. This network includes optical cables, optical

## Testing Fiber Optic Couplers, Splitters Or Other Passive

---

Testing a splitter or other passive fiber optic devices like switches is little different from testing a patchcord or cable plant using the two industry standard tests,

## Optical Line Terminal: Key to Modern Fiber Networks

---

How Optical Line Terminals Work Optical Line Terminals (OLTs) are key in managing data in fiber optic networks. They help send data fast over long distances. They also deal with lots of



## **Primary and secondary optical splitters in FTTH networks**

---

There are two different distribution modes of optical splitter in FTTH network: centralized distribution and cascaded distribution, which correspond to

## **Optical Splitters: Split Ratios, Splitting Architectures & PON Network**

---

By dividing a single optical signal from a central Optical Line Terminal (OLT) into multiple outputs for Optical Network Terminals (ONTs) at users' homes, splitters eliminate the need for

## **Optical line termination**

---



An optical line termination (OLT), also called an optical line terminal, is a device which serves as the service provider endpoint of a passive optical network.

## Understanding OLT, ONU, ONT, and ODN in PON

---

OLT stands for Optical Line Terminal, which is a device used for connecting fiber optics and transmitting signals. The OLT serves as the starting

## OLT vs ONT - What's the Difference?

---

**OLT Model & Split Ratio:** The OLT connects to ONTs via optical splitters, which distribute the signal. A common split ratio is 1:32 (one OLT port serving 32 ONTs), but ratios like 1:64 or 1:128



## The Working Principle and Application Scenarios of

---

The working principle of fiber optic splitters is based on optical coupling and splitting . When a light signal enters the splitter, it is divided into

## What Is an OLT? , Definition, Function & Role in GPON

---

Optical Line Terminal Overview What is an OLT? Definition: An Optical Line Terminal (OLT), also called an Optical Line Termination, is a network device

## What is OLT and Why is it Important in Fiber Networks

---

What is Optical Line Terminal (OLT)? An OLT is the main device in fiber networks, converting signals and managing data for fast, stable internet



## Contact Us

---

For datasheets, pricing, or custom optical networking solutions, please visit:  
<https://www.entrenamientointeligente.es>