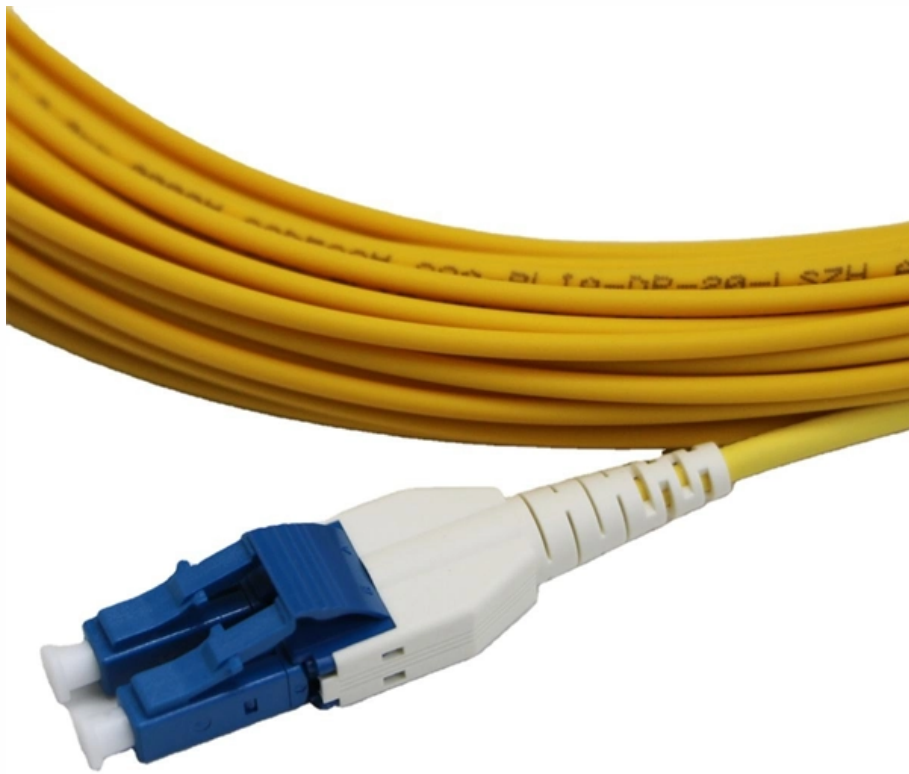


The distribution box can be placed in





Overview

Choose the right box based on environment (indoor/outdoor), load capacity, and durability. In this guide, we'll break down everything you need to know to install a distribution box correctly and confidently. It receives power from the main electrical supply and divides it into separate circuits, each. In modern electrical systems, cable distribution boxes (also known as electrical distribution boxes or distribution boxes) play a crucial role as the key hub for managing, distributing, and protecting circuits.



The distribution box can be placed in

Distribution Box Installation: A Complete Guide to Safe

Mount the distribution box in a convenient, accessible location that complies with local electrical codes. Typically, this is in a basement, utility room, or garage.

Power Distribution Boxes Explained Simply

Discover the essentials of a Power Distribution Box--how it works, key types, benefits, and tips to ensure safe, efficient electrical power management.



Comprehensive Understanding of Distribution Box

A distribution box helps manage electricity in homes or workplaces. It makes sure power flows safely and efficiently to devices. Let's look at its main jobs. Power distribution and circuit management The

Complete Guide For Distribution Boxes Types

Distribution boxes, also known as electrical distribution boards or panels, are pivotal components in electrical systems, ensuring the safe and organized distribution of

What Is a Distribution Box?

You should choose a distribution box that's made of a durable material, for instance. Synthetic rubber is an excellent choice. When made of



Where is the best place to put a Electrical distribution box?

In addition, the location should be close to the main electrical power source so that the box can easily be connected to it. When choosing the best place to put a Electrical distribution

Understanding Distribution Boxes:A Comprehensive Guide

A distribution boxes is an essential device that manages the safe and efficient flow of electrical power throughout different areas of a building or facility.

Small distribution box installation steps



The steps to install a small distribution box include selecting a suitable location, installing the base, placing the distribution box, connecting the

The purpose, working principle, and usage instructions

The distribution box is an electrical equipment with the characteristics of small size, easy installation, special technical performance, fixed position,

Installation points of household distribution box

The distribution box of household distribution box should not be installed too high. Generally, the installation elevation is 1.8m to facilitate operation; the electric pipe



Where Is the Distribution Box Located and How to Find It

Can an electrical panel be located in a bedroom? According to the NEC, electric panels are allowed inside bedrooms, but it's advised homeowners

How to Install a Cable Distribution Box Safely and

Conduct a detailed survey of the installation site to determine the installation location of the cable distribution box. The installation location should

How to Install a Cable Distribution Box Safely and

In modern electrical systems, cable distribution boxes (also known as electrical distribution boxes or distribution boxes) play a crucial role as the key



The Importance of Distribution Boxes in Electrical Systems

Learn more about how distribution boxes play a critical role in the safe and efficient operation of electrical systems.

Distribution Box Guide: Types, Components & Solutions

Understand distribution boxes (DB boxes) in 5 minutes. Learn about types, components, functions, and uses. Find the perfect DB box for your needs.



Distribution Boxes Explained: Types, Functions, and

Learn about distribution boxes, their types, functions, and safety features to ensure efficient and secure electrical power distribution in any building.

What is the Function of a Distribution Box in Electrical Systems

Understand the function of the distribution box in electrical systems and how it ensures safe and efficient power distribution.

Distribution box

Yet the distribution box is a highly complex component that not only ensures safe power distribution, but is also responsible for protection in an emergency. In this article, you will learn everything you need



Requirements And Specifications For Installation Of

In flammable and explosive environments, explosion-proof distribution boxes should be selected and explosion-proof treatment should be carried out.

Distribution Boxes: Types and Functions

Learn what an electrical distribution box (DB/distribution board) is, its main components (MCB/RCCB/RCBO, SPD, busbar) and common types.

The Complete Guide to Distribution Box: Installation, Types & More



Understanding the key components of a distribution box helps you make informed decisions about installation and maintenance. Each element plays a specific role in ensuring safe

How to Install a Distribution Box--A Comprehensive

Before starting the installation, finding a proper place for putting the distribution box is crucial, because it largely decides the safety and convenience

How Does a Power Distribution Box Work

Learn how a power distribution box works step by step--from incoming power to circuit protection and smart monitoring--for safe, efficient electricity delivery.



Key Points Of Installation And Collocation Of Distribution Box In

7. The wire inlets and outlets in the distribution box and switch box shall be set at the lower bottom of the box. It is strictly prohibited to set them at the top, side, back or door of the box. The inlets and outlets

Size determination, installation method and wiring mode

6) The electrical appliances in the distribution box shall be first installed on the non-metallic or wooden insulated electrical installation board, and then fastened in the

Understanding Distribution Boxes: A Comprehensive Guide

Learn what a distribution box is, its types, and how to choose the right one for your



project. Includes clear examples and expert tips.

Understanding Distribution Boxes: Your Guide to Power

A: A junction box is primarily used to connect electrical wires, while a distribution box is designed to distribute power to various circuits. The distribution

Size determination, installation method and wiring mode

The distribution box is the central hub of the home circuit and the general control of our daily power consumption. It is an indispensable electrical equipment. If there



Explore Power Distribution Box Types and Functions

Power distribution boxes are used in commercial and residential buildings and are part of the electrical system, also known as switchboards.

Contact Us

For datasheets, pricing, or custom optical networking solutions, please visit:
<https://www.entrenamientointeligente.es>