

The electrical distribution box cannot be installed after tiling



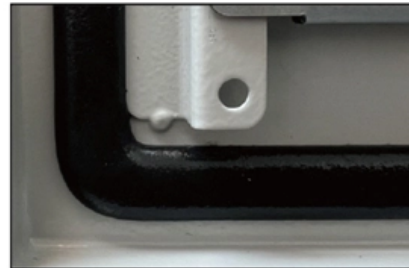
Strengthen door locks
More durable and aesthetically pleasing



Grounding screw
More aesthetically pleasing and safer



Removable hinges
Make operation more convenient



Sealing strip
Dustproof and waterproof





Overview

The electrical code mandates that the outer edge of the electrical box and backsplash tile should be flush, with the box not inset in the wall. Boxes and cables are installed first, then tiling is done and the tiler drills holes for all the boxes. Also the junction box either needs to be moved out flush with tile or have an depth adjustment ring attached to hold the outlet flush to the tile. It takes the incoming power and safely distributes it to different circuits throughout your building.



The electrical distribution box cannot be installed after tiling

How To Adjust Outlets For Tile Backsplash?

Before starting any electrical work, turn off power at the outlet box and align the tips of the screws with the screw holes in the wall. After tiling, ensure

Backsplash Tile Around Outlets: Safe Techniques and Best Practices

The article explains practical, code-aware methods for installing backsplash tile around outlets, covering safety, tools, cutting techniques, and finishing for a clean, professional look. It helps



How to Tile Around Outlets: 15 Steps (with Pictures)

Many home tiling jobs will require you to work your tile around existing electrical outlets and switch plates. Bathrooms and kitchens will have one or more outlets that must be incorporated in this way. Achieving a clean finish, with the

How to Install Wall Tile Around Electrical Outlets

Most any wall you install tile on outside of a bathtub is likely to have an electrical outlet and/or a light switch. When you finish, you want the outlet to

How To Extend Electrical Outlet Over Tile

Fortunately, with a few tools and careful attention to safety, extending an electrical outlet over tile is an achievable task for anyone. Extending an



How to Install a Cable Distribution Box Safely and

In modern electrical systems, cable distribution boxes (also known as electrical distribution boxes or distribution boxes) play a crucial role as the key

How to bring outlets forward after installing backsplash

Electrical - AC & DC - How to bring outlets forward after installing backsplash - Just finished installing backsplash in the kitchen and the issue now

Essential Guide: What to Do with Electrical Outlets When Tiling for a



Discover how to effectively tile around electrical outlets with our comprehensive guide! Learn best practices for outlet placement, safe disconnection and reconnection methods, and creative

Outlet sits too deep after tiling kitchen backsplash : r/fixit

A box extender is a better solution in many ways - wiring connections are contained within electrical boxes for a handful of reasons. Using the

What is the correct way to tile a wall when there are

If your tile layer is too thick for this simple approach, you may need to move your electrical box out. If you have old work boxes (the kind that are



How to Cut Backsplash Tile Around Outlets Safely and Precisely

Why Properly Cutting Tile Around Outlets Matters Fitting tile around outlets affects both aesthetics and function. Poor cuts can leave gaps, create uneven edges, and complicate outlet

How to Tile Around Outlets: A Comprehensive Guide

How to Tile Around Outlets To tile around outlets, start by turning off the electricity to the outlets. Remove the cover plate and unscrew the outlet from

Can wiring be done after tiling



There are a few companies selling wireless LED mirrors which are run by a rechargeable battery (downside is that you need to keep recharging the batteries). Otherwise it's a job of pulling off

How to bring outlets forward after installing backsplash

Just finished installing backsplash in the kitchen and the issue now is that the outlets are at the same level as the tile (pictured), so the faceplates

The installation requirements for the distribution box

A distribution box is the heart of any electrical system. It takes the incoming power and safely distributes it to different circuits throughout your



How To Install Backsplash Tile Around Electrical Outlets

This guide provides a step-by-step guide on installing a tile backsplash around electrical outlets. It covers the entire process from planning to

Add an Outlet to a Finished Wall

Hubs hooks the wiring up to the retro-fit box (again, a deeper box to accommodate the added depth of the tile). The Family Handyman has a good

How To Put Tile Over Wall Outlet

To tile around electrical outlets, turn off the electricity to the outlets, remove the cover



plate, and unscrew the outlet from the electrical box. This will allow you to insert outlet extenders to

The installation requirements for the distribution box

Learn how to install a distribution box safely and correctly. Covers wiring, placement, standards, and expert tips for a compliant setup.

Power outlet covers not fitting after installing new

Your new tile appears to be blocking the lower portion of the junction box mounting screw. Also the junction box either needs to be moved out flush with tile or have



Should Electrical Boxes Be Flush With Backsplash Tile

The electrical code mandates that the outer edge of the electrical box and backsplash tile should be flush, with the box not inset in the wall. However, adding a backsplash creates an inset,

Key Points Of Installation And Collocation Of Distribution Box In

Distribution box and switch box shall be made of iron plate or high-quality insulating material, and the thickness of iron plate shall be greater than 1.5mm The electrical equipment in the distribution box

How to Cut and Install Tile Around Outlets

Learn the safe, precise steps for measuring, cutting, and installing tile flush around



electrical boxes for a professional finish.

Move Electrical Outlet Box when installing Ceramic Backsplash?

If it's an existing box, and you're simply tiling around it, you'll find a box extender by far the easiest and cheapest solution. Easier than changing an outlet. A lot nicer than

Contact Us

For datasheets, pricing, or custom optical networking solutions, please visit:
<https://www.entrenamientointeligente.es>