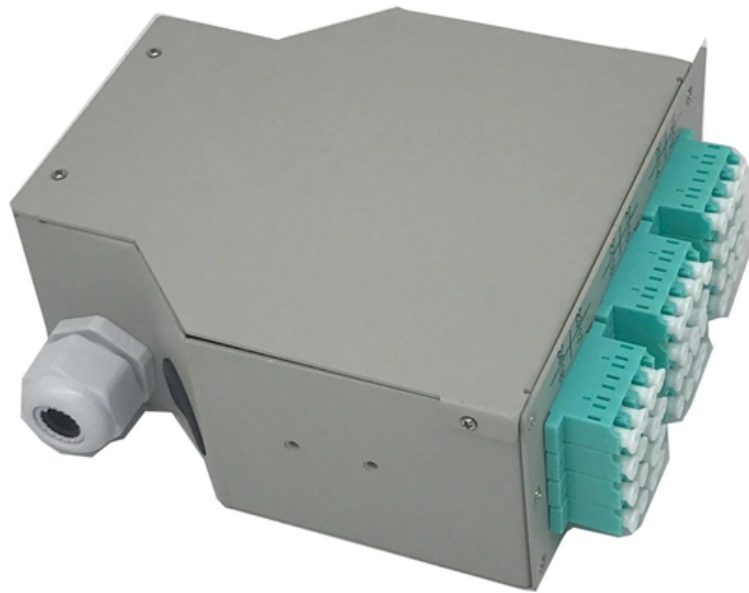


# **Thickness requirements for electrical distribution boxes on construction sites**





## Overview

---

for lighting electrical distribution boxes and control boxes with a size greater than or equal to 600mm, 2. This section should be carefully reviewed and edited by the Architect or Engineer to meet the requirements of the project and local building code. This fact sheet explains how to apply the requirements shown in AS/NZS 3012:2019 Electrical installations - construction and demolition sites (AS/NZS 3012:2019), which is called up as a mandatory standard by section 163 of the Work Health and Safety Regulation 2025 (WHS Regulation).



## Thickness requirements for electrical distribution boxes on construction

---

# Requirements And Specifications For Installation Of

---

The installation requirements and specifications of Distribution box involve many aspects, including site selection, fixing method, wiring specifications

## Complete Guide For Distribution Boxes Types

---

Distribution boxes, also known as electrical distribution boards or panels, are pivotal components in electrical systems, ensuring the safe and organized distribution of

## SECTION 26 05 34 ELECTRICAL BOXES

---



SECTION 26 05 34 ELECTRICAL BOXES PART 1 - GENERAL 1.1 RELATED DOCUMENTS: A. The Conditions of the Contract and applicable requirements of Divisions 0 and 1 and Section 26 00 01,

## **Requirements for distribution box at construction site**

---

Rubber insulated cables shall be used for the incoming and outgoing lines, and the incoming and outgoing ports shall be set at the lower end face of the box body, with protective rings added.

## **Cautions and Requirements for Installation of**

---

8. After installation, the residue in the distribution box should be cleaned up. When the distribution box is installed and constructed, some safety operation items



## **26 05 33.16 Boxes for Electrical Systems**

---

Connect wires as branch circuitry as required per plans and in accordance with N.E.C. and AHJ requirements using UL listed wire connectors. Ensure that device(s) and junction box are properly

## **Understanding Distribution Boxes: A Comprehensive Guide**

---

A distribution box, also known as a power distribution box or electrical distribution box, is used to distribute electrical power safely to multiple

## **The installation requirements for the distribution box**

---



In this guide, we'll break down everything you need to know to install a distribution box correctly and confidently. Choose the right box based on

## **ENERGY METALBOX Assemblies for Construction**

---

ENERGY METALBOX range consists of construction site distribution boards in metal cabinets with technopolymer socket-outlets. The steel sheet enclosure is fitted

## **Key Material Requirements for Distribution Box**

---

Learn the key material requirements for distribution box, Discover how the right materials ensure long-lasting performance and safety.



## **The Meaning and Function of Primary, Secondary, and Tertiary**

---

Differences Between Primary, Secondary, and Tertiary Distribution Boxes  
Primary Distribution Box: Designed specifically for construction sites, conforming to relevant electrical codes.

## **How to Install a Cable Distribution Box Safely and**

---

In modern electrical systems, cable distribution boxes (also known as electrical distribution boxes or distribution boxes) play a crucial role as the key

## **How to Install a Distribution Box--A Comprehensive**

---

Whether you are an electrical contractor or a construction brigade, knowing how to properly and safely install distribution boxes is the basis of



## Construction site electrical enclosure

---

Find your construction site electrical enclosure easily amongst the 25 products from the leading brands (HLC, WALTHER WERKE, DIGITAL ELECTRIC, ) on

## Temporary electrical wiring for construction sites

---

Temporary for construction Construction work requires electrical power for many purposes. However, exposure to weather, frequent relocation, rough use and other conditions not normally encountered

## Distribution Box and Selection Guide

---



The nature of your property plays a crucial role in determining the appropriate Distribution Box. Different settings have distinct electrical

## **ENERGYBOX Assemblies for Construction Sites (ACS)**

---

ENERGYBOX is a complete range of Assemblies for Construction Sites (ACS) pre-wired boards that can be wall-mounted or installed on a support.

## **Electrical practices -- construction and demolition sites**

---

The standard sets out minimum requirements for the design, construction and testing of electrical installations that supply electricity to appliances and equipment on



## **Detailed introduction of safety requirements for distribution box**

---

The distribution box shall be installed in the area where the electric equipment is relatively concentrated. 3. The power distribution and lighting distribution of construction electricity should be

## **Temporary electrical wiring for construction sites**

---

work requires electrical power for many purposes. However, exposure to weather, frequent relocation, rough use and other conditions not normally encountered with conventional wiring systems

## **What are the criteria for selecting the thickness of the sheet metal**

---



- For electrical distribution boxes with high protection level requirements, such as IP54, IP65, etc., sheet metal with sufficient thickness is required to ensure the tightness and strength of the

## Safety requirements for distribution box

---

1? The power distribution system at the construction site shall be equipped with indoor general distribution panel and distribution box or outdoor general distribution box and distribution box for

## Outdoor Electrical Distribution Box Specifications: NEC

---

Complete specification guide for outdoor electrical distribution boxes covering NEC Article 312 requirements, NEMA ratings, sizing calculations, and



## Design requirements and standards for low voltage

---

You must make safety your top priority when working with low voltage distribution boxes. Design requirements help you follow important standards like

### Contact Us

---

For datasheets, pricing, or custom optical networking solutions, please visit:  
<https://www.entrenamientointeligente.es>