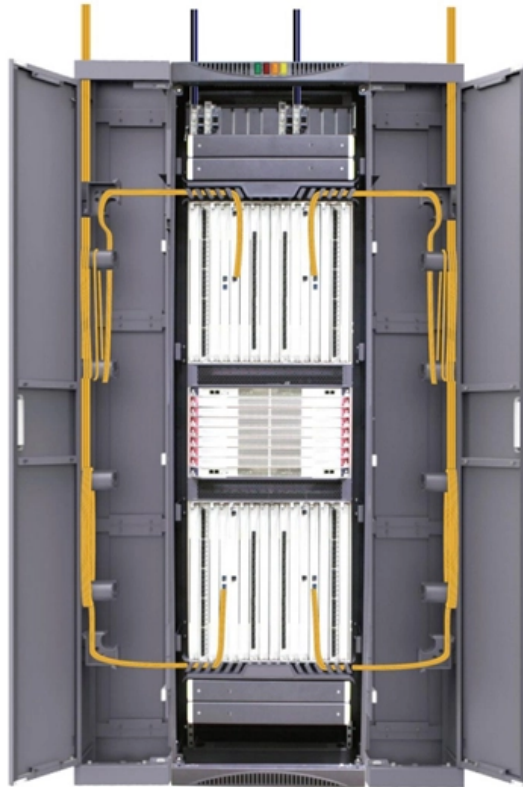


What is XLC cable tray





What is XLC cable tray

What are Cable Trays? Everything you need to know

Discover everything about cable trays in industrial settings: types, benefits, installation tips, and compliance with NEC and fire resistance standards.

Cable Tray Capabilities

Cable tray is also popular as an option for forward project planning: It is much easier to lay new cables onto a tray system as the needs of a project changes over time,

How to Choose Tray Cable , Jacket, Armor &



Conductor Guide

A distributor's guide to tray cable selection. Learn how jacket, conductor, shielding, layout, and armor choices align with environment and code requirements.

Cable Tray Systems

Durable and reliable cable tray systems providing premium performance in commercial and industrial applications, available in a variety of materials to suit your needs.

Tray Cables

Tray cables are used in control and power applications in chemical plants, steel mills, industrial plants, utility substations and generating stations, as well as commercial buildings. Tray cables are available



Cable Tray Technical Guide A practical guide to product selection and

Cable Tray Technical Guide A practical guide to product selection and installation This guide for engineers and installers has been developed by ABB as a practical reference regarding cable tray

What is the Difference Between Basket Cable Tray and

When designing an efficient cable management system, selecting the right type of cable tray is a crucial decision. Two of the most common types of

Cable tray



In the electrical wiring of buildings, a cable tray system is used to support insulated electrical cables used for power distribution, control, and communication. Cable

Tray Cable Specifications: XLPTC and TC-ER Essentials

A distributor's guide to the six tray cable specs, from 90°C ratings to TC-ER, that drive quote accuracy, fewer returns, and smarter inventory decisions.

A Comprehensive Guide to Tray Cable

What is tray cable? Tray cable is a widely used type of multiconductor or multipair cable approved for installation in cable raceways and cable trays.



Cable Tray and Cable Ladder Installation Checklist

Streamline your cable management process with our expert checklist for Cable Tray and Cable Ladder Installation. From precise routing to secure mounting, ensure a

Everything You Need to Know About Cable Trays , Cable Trays

Discover the different types of cable trays, their many benefits when used in electrical wiring and network cabling, installation processes, and essential maintenance tips for keeping your

PLTC, ITC & TC Tray Cables , Eland Cables

UL Style tray cables - for instrumentation applications (ITC) 300V and power and control



(TC) 600V variants. Full technical support, fast quote and express delivery available.

A Comprehensive Guide To Tray Cables

Tray cables follow a separate group of UL and NEC specifications and are more sturdy and resistant to heavy abrasion compared to other

Cable Tray Types and Sizes

Explore various cable tray types and sizes for electrical installations. Learn about ladder, perforated, solid-bottom, wire mesh, and channel trays in this complete

Cable Tray , EAE Electric , Medium & heavy duty



Explore EAE Electric's medium and heavy-duty cable tray systems designed for optimal cable management and durability in industrial and commercial applications.

Types of Cable Trays - Purpose, Advantages,

Cable tray is alternatives to wire ways and electrical conduits, which completely enclose cables. Study types of cable trays, purpose, advantages.

Types of Cable Trays - Advantages, Applications and Sizes

In this article, we'll explore the most common types of cable trays, their advantages, and the cable tray sizes available to help you choose the right one for your project.



Heavy Duty Cable Tray - Unitrunk

The patented UniKlip® system enables 3X faster installation speeds. Available finishes include: Pre-galvanised to BS EN 10346:2015 (standard references

What Is A Cable Tray? 5 Types Of Cable Trays

A cable tray is a structural system used to support and manage electrical cables in various settings, such as industrial, commercial, and residential environments.

XLP/PVC Tray Cable , Allied Wire & Cable

XLP/PVC Tray Cable features Class B stranded bare copper conductors, flame-retardant cross-linked polyethylene insulation, and block sunlight and moisture resistant PVC



jacket. It is rated for up to 600

Types of Cable Trays: Ladder, Perforated, Basket, Solid

Explore all types of cable trays--ladder, perforated, basket, solid, and channel. Learn their uses, materials, pros, cons, and key differences.

The Ultimate Guide to Tray Cables: Types, Applications and

When it comes to powering, automating and protecting facilities?from factories and petrochemical plants to data centers and high-rises?the right cable makes all the difference. Among



Explaining NEC Article 392 on Cable Trays

NEC Article 392 explains cable trays, their components, appropriate wiring methods for cable trays, and instances where they are and are not

Accell

Accell - XLC XLC - WE ARE THE SMARTEST BIKE PART OF YOUR JOURNEY. With every part from us, you know you've made the right choice. You can even feel it - with every turn on your bike. We

XLC Bike Parts & Accessories

XLC Parts & Accessories at BIKE24 Seatposts, Brakes, Handlebars & Pedals at Great Prices! Fast shipping Top-Rated Support Buy now!



How to Install Cable Tray: A Comprehensive Guide to Different Cable

Welcome to our step-by-step guide on installing cable trays! In this video, we'll explore the different types of cable trays available and provide detailed instructions for their installation.

GUIDE CABLE TRAYS TECHNICAL

In accordance with its continuous improvement policy, Legrand reserves the right to change the specifications and illustrations without notice. All illustrations, descriptions and technical information

Contact Us



For datasheets, pricing, or custom optical networking solutions, please visit:
<https://www.entrenamientointeligente.es>