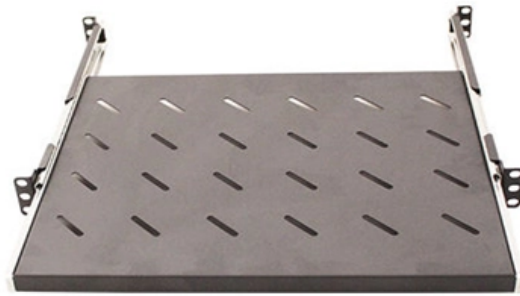


What is the formula for calculating the beam splitter



Webit Cabling





What is the formula for calculating the beam splitter

Beam Splitter Input-Output Relations

The elements of the beam splitter transformation matrix B are determined using the assumption that the beamsplitter is lossless. While a beamsplitter is never lossless, it is a good approximation for most

Beam splitter , Description, Example & Application

A beam splitter is an optical device that splits a single beam of light into two or more beams. It is commonly used in scientific and industrial applications.



What Is a Beam Splitter and How Does It Work?

Pellicle Beam Splitter The Pellicle Beam Splitter uses an extremely thin membrane of optical film stretched over a frame. Because the film is only a few micrometers thick, this design

Fiber Optic Calculators , FSI Technical Tools

Fiber Collimator Calculator Fiber collimators transform diverging light from fibers into parallel beams, enhancing optical system performance. The Fiber Collimator

How to Calculate Splitter Loss in Optical Fiber

Calculating splitter loss in optical fibers is essential for designing efficient optical networks. Understanding the types of splitters, their impact on network performance, and how to measure their



How to Calculate Splitter Loss in Optical Fiber

This article aims to provide a detailed explanation of how to calculate splitter loss in optical fiber, an essential factor in optimizing network efficiency. The significance of understanding

(PDF) Theory for the Beam Splitter in Quantum Optics:

Abstract and Figures The theory of the beam splitter (BS) in quantum optics is well developed and based on fairly simple mathematical and physical

What are Beamsplitters?



Beamsplitters are optical components used to split incident light at a designated ratio into two separate beams. Additionally, beamsplitters can be used in reverse to

Beam Splitter

The beam splitter can be a half-silvered mirror set at an angle of 45 degrees to the incoming beam (see Fig. 4.3), where the coefficient of reflection is so adjusted that the reflected and transmitted beams

CMU School of Computer Science

æç æY± beams å° bean ç°çè± + bean ç°çè± + beans è± + ç±» beans ç+S bear æ?ìå -- bear èfiå beard èfiéi» beard èfiå beards å? ç-å±oä°° bearer æå·¥ä» ¬ bearers è½ìå« bearers ä,



Parameters of Beam Splitter

Article introduces the meaning of the basic parameters of beam splitter. Beam splitter at specific angles, creating arrayed beams, spot size on

Diffraction Pattern Calculation from a Reflection-Type Diffractive Beam

Most diffractive beam splitter is designed with the normal incidence assumption. More specifically, the structure design from transmission function, which is achieved by using Iterative Fourier Transform

Beam Splitter

Within the interferometer, a beam-splitter directs one beam of light down a reference path, which has a number of optical elements including an ideally flat and smooth mirror



from which the light is

Composing beam splitters

Let a , b and c be independent modes in a system S and in environments E_1 , E_2 respectively. Suppose a goes through a beam-splitter characterized by a parameter

Beam Splitter

The incoming beam is divided by the beam splitter into two beams marked 'a1' and 'a2' against the arrows depicting their directions of propagation. These are reflected from M 1 and M 2 and proceed



Beam Splitters -- Abridged Guide

Quick-reference guide for beam splitters -- key equations, type comparison tables, Fresnel reflectance, polarizing designs, and a practical selection workflow. Condensed from the comprehensive guide.

Fundamental properties of beamsplitters in classical and

A lossless beam-splitter has certain (complex-valued) probability amplitudes for sending an incoming photon in to one of two possible directions.

Coherent states, beam splitters and photons

Classically, a 50/50 beamsplitter splits the intensity of an incoming beam in two. Quantum-mechanically, it will not split each photon in two, but it will transmit or reflect each photon with 50% probability (see



Quantum Mechanics of Beam Splitters

Beamsplittertransformations have profound impacts on coherence and entanglement, particularly in multi-mode quantum states. They can convert

A Comprehensive Guide to Beamsplitter Matrix

Typically, a beam splitter improves the throughput of a laser system by splitting the input laser beam. The laser system's throughput will be improved

Beam splitter phase shifts: Wave optics approach



We investigate the phase relationships between transmitted and reflected waves in a lossless beam splitter having a multilayer structure, using the matrix approach as outlined in classical

Calculating Allowable Splitter Loss in Optical Networks

Learn how to calculate splitter loss in optical networks. Includes fiber, connector, and splitter loss calculations for tap installation.

Lecture9: The lossless beamsplitter Lec

Input-output relations: So far, we have characterized important classes of quantum states in terms of their eigenvalues and eigenvectors, as well as in terms of their photon statistics. In the following



Lecture9: The lossless beamsplitter Lec

probabilities add themselves up. In case of a symmetric beam splitter, we can visualise the possible paths that the two photons can take (see Fig. 14). The two photons, here labelled in green and red

Contact Us

For datasheets, pricing, or custom optical networking solutions, please visit:
<https://www.entrenamientointeligente.es>