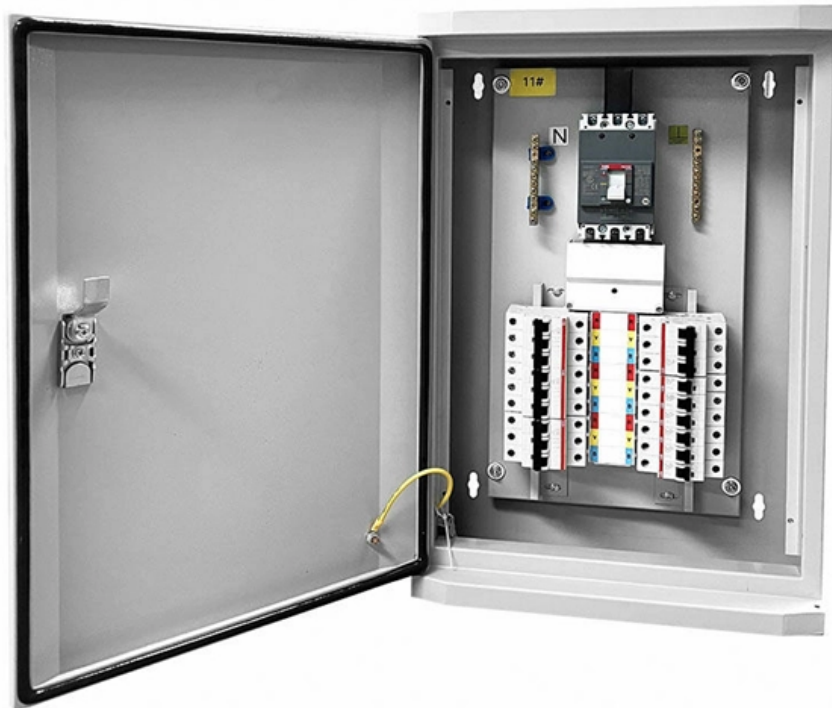


What quota should be applied for cable tray installation





Overview

Cable tray support quantity can be calculated using a simple formula: $\text{Support Quantity} = \text{Total Length} \div \text{Support Spacing} + 1$. $20 \div 2 + 1 = 11$ supports. In a typical project, a 20-meter cable tray with 2-meter spacing requires 11 supports. The flexibility and scalability of cable trays make them an ideal choice for environments where cable density and organization can significantly impact operational efficiency. Once completely installed, without damage either to conductors or structural system use maintain spacing or to keep cables in place when the tray is bent the minimum bend radius for cables as they exit the bottom of the cable tray. This is a description of how to select, install, and support these metal or plastic frames, on which electrical wires are installed.



What quota should be applied for cable tray installation

NEC Article 392 Guide: Ensuring Compliance for Cable

Master NEC Article 392 with our comprehensive guide. Learn essential cable tray requirements for installation, grounding, and fill capacity to

Cable Tray Installation Rules (NEC 392) - Electrical Trader

The 2026 NEC introduced an important update: cable trays must have at least 12 inches of clear vertical space above them to allow for installation and maintenance access.



How to Calculate Cable Tray Fill: NEC Screening for Tray Sizing and

How to Calculate Cable Tray Fill: NEC Screening for Tray Sizing and Spare Capacity Planning Problem Framing Skipping a cable tray fill check during layout design leads to two costly

A Guide to Installing and Supporting Electrical Cable Trays

This guide covers the critical steps, from selecting the right electrical cable tray and performing accurate cable fill calculations to managing a safe cable pull through

Cable Tray Installation

Learn everything about cable tray installation with our complete guide. Discover types,



steps, and safety tips for efficient electrical cable management.

Beama Best Practice Guide , Installation Of The System , Cable

Cable ladders, cable trays and their supports should be strong enough to meet the load requirements of the cable management system including cables and any future cable additions and any other

Cable Tray Questions , Cable Tray Institute

Answer: The NEC does not have a specific installation clearance, but indicates in section 318-6 (b) that cable trays should be exposed and accessible. Telecommunications standard TIA/EIA-569



Cable tray manual

Instead of large conduits, cable channel may be used very effectively to support cable drops from the cable tray run to the equipment or device being serviced and is ideal for cable tray runs involving a

5 Golden Rules for Safe & Compliant Cable Tray Installation

Improper installation can lead to cable damage, overheating, structural collapse, and severe safety hazards. To ensure your electrical infrastructure is robust, compliant, and future-proof,

Cable Tray Technical Guide A practical guide to product selection and



In designing supports for a cable tray system, consideration should be given to the loads associated with future cable additions and any additional loading that may be applied to the cable tray system (e.g.,

Method Statement installation of Cable Trays and Ladders

This method statement covers the site installation of the cable tray & ladders and the requirements of checks to be carried out.

Best Practices for Installing Cables in Trays

Learn the best practices for installing cables in trays. This guide covers essential steps, technical requirements, and key details for efficient cable



A Guide to Installing and Supporting Electrical Cable Trays

A professional guide to installing electrical cable tray systems per NEC Article 392. Covers support, securing cables, and fill calculations.

Cable Tray Spacing Standards for Installation and Safety

Proper installation can significantly reduce electromagnetic interference, prevent fire hazards, and improve overall efficiency. This article

Cable Tray and Conduit Installation Method Statement



Step-by-step cable tray and conduit installation method with safety, quality and inspection procedures as per IEEE standards.

Installation of Cable Tray, Trunking And Accessories

They should not be dropped. 7.1.5. Make sure that it is the appropriate quality of cable tray, ladder, and accessories that are delivered for installation. 7.1.6. The location of hangers and

How to Calculate the Cable Tray Support Quantity

Learn how to accurately calculate cable tray support quantities in electrical installation projects. Our guide covers methods,



Cable Laying Charges Comparison Report , PDF

The document presents a comparison report of quotations for cable trays and cable laying from three companies: Royal Engineering, Al-Ahmad Associates, and Premier Engineering & Solutions. It

Best Practice Guide to Cable Ladder and Cable Tray Systems

Introduction This publication is intended as a practical guide for the proper and safe* installation of cable ladder systems, cable tray systems, channel support systems and associated supports.

Cable Tray Technical Guide A practical guide to product selection and

A practical guide to product selection and installation This guide for engineers and



installers has been developed by ABB as a practical reference regarding cable tray characteristics, installation, and

NEC Standards for Cable Trays: Grounding, Fill Capacity

This article provides a comprehensive framework that governs various aspects of cable tray installations, including the types of cables that are deemed acceptable for use, requirements for

Safely Installing, Maintaining and Inspecting Cable Trays

Cable trays support cables across open spans in the same way that roadway bridges support traffic. Cable trays can provide a safe component of a power, low voltage control, data or



Mastering Cable Tray Installation , Step-by-Step Guide for a Seamless

Conclusion Mastering cable tray installation is crucial for creating a safe, organised, and efficient cable management system. By following this step-by-step guide, you can ensure a seamless

Cable Tray Sizing Calculator , IEC 61537 & NEC 392 Guide

Use this cable tray sizing calculator to check fill %, select tray size, and comply with IEC 61537 & NEC 392 with formulas, example and checklist.

Cable Tray Installation Cost per Meter - Price Estimator



Cable tray installation cost per meter varies by specifications; GangLong Fiberglass offers kits for raised floor system and facility needs. Cable

Cable Tray Installation and Maintenance Considerations

Learn about effective Cable Tray Installation and Maintenance. Get practical tips for planning, fitting, and looking after your cable trays.

Free Cable Tray Sizing Calculator -- IEC, AS/NZS, NEC, BS

The cable tray calculator determines the required tray width and type based on the number and size of cables to be installed, ensuring adequate fill levels and derating compliance.



Cable Tray and Trunking Installation Guide , PDF

The document contains a list of cable tray, cable ladder, and trunking items with their quantities. It includes 17 items of cable trays of various sizes from 900mm to

100+ Essential Questions Answered About Cable Trays:

Discover over 100 expert answers about cable trays, covering key topics like material selection, load capacity, installation methods, and maintenance.

Contact Us

For datasheets, pricing, or custom optical networking solutions, please visit:
<https://www.entrenamientointeligente.es>